

BayLan

POS80-300IIIBW

WIFI Setting and Driver Installation

WIFI Setting & Driver Installing

We should ensure following two points when we held this printer on hand.

- 1: A valid IP address should be allocate to the printer as required.
- 2: Install the correct driver for your printer

How to allocate a valid IP for our printer?

Two ways for reference :

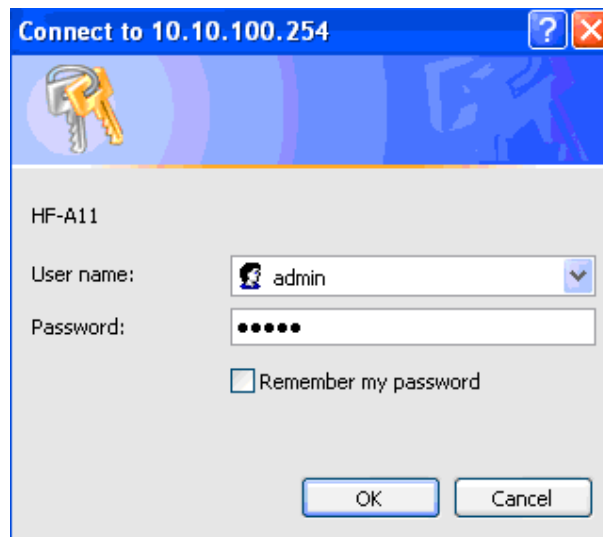
- 1: WIFI connection setting (Wireless network required)
- 2: Connect the printer and pc with RJ45 ports;

> If WIFI connection method, we should refer to following steps (step 1 to step 9)

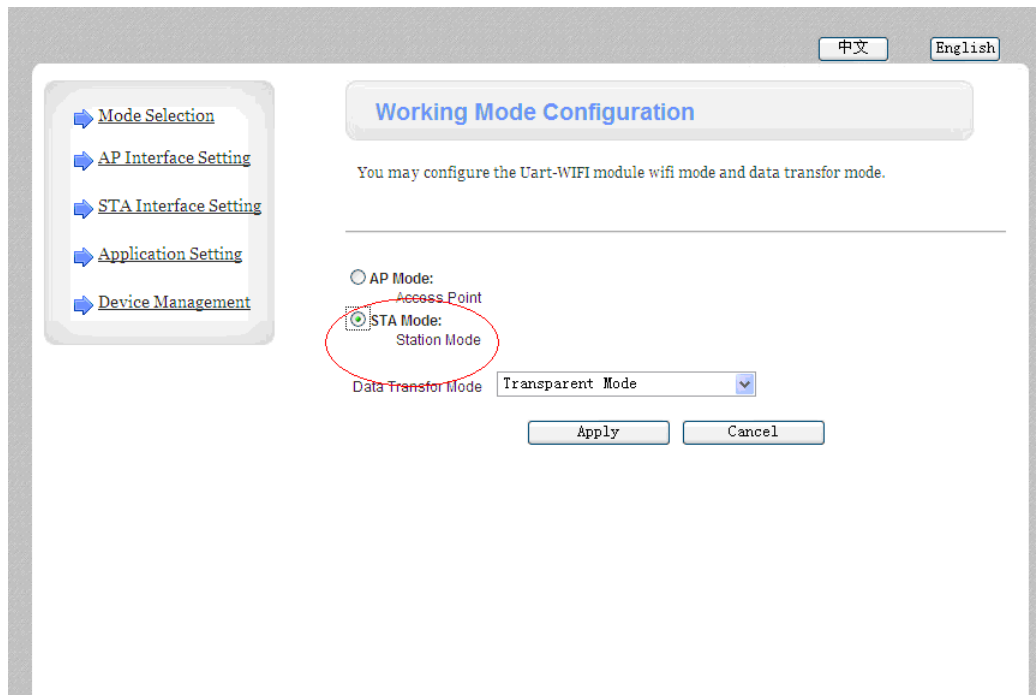
> RJ45 connection method, we have to follow from step 3 to step 9;

1. Plug and switch on the printer;
2. Find the wireless network and link it. Then find the file named “HF-A11” and link it – Next;

3. Put the IP address (10.10.100.254) into the browser address bar, press enter we can see below window;

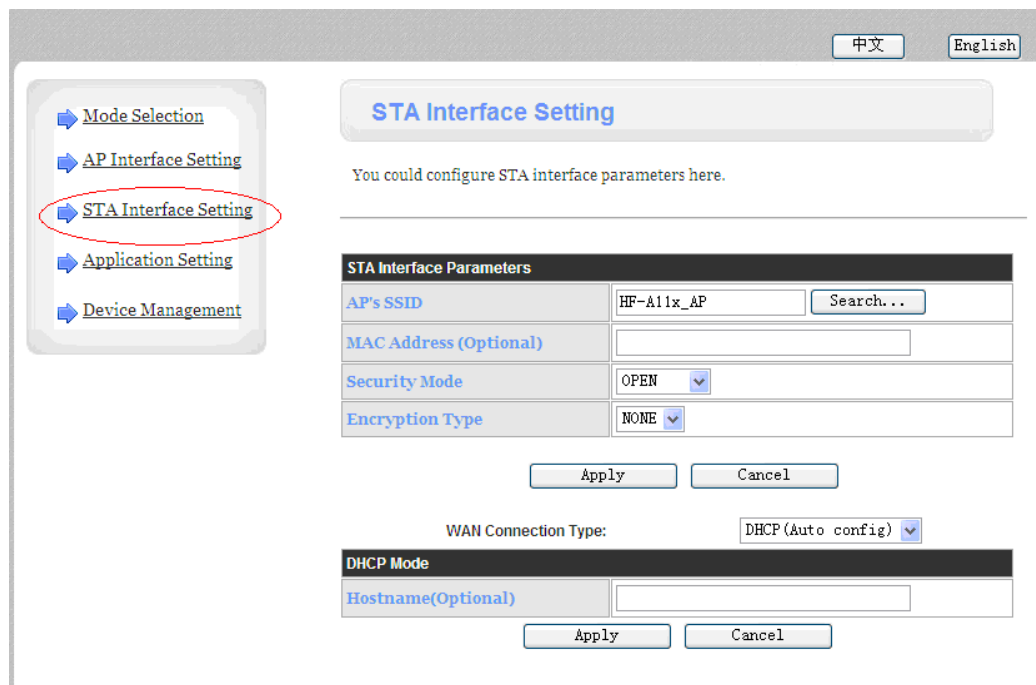


Choose admin for the user name and default password is also admin. Press ok and then Next.

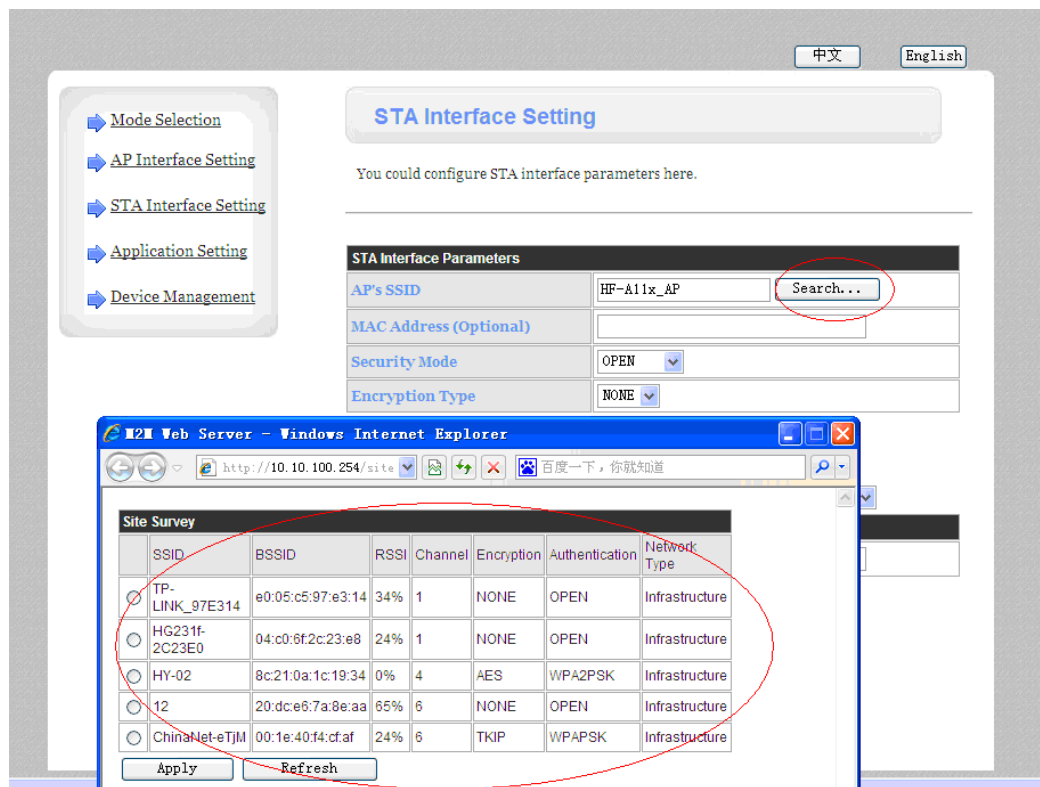


> Select "Station Mode ", Choose transparent mode. Refer to above jpg.

4. Select " STA interface Setting " as below;

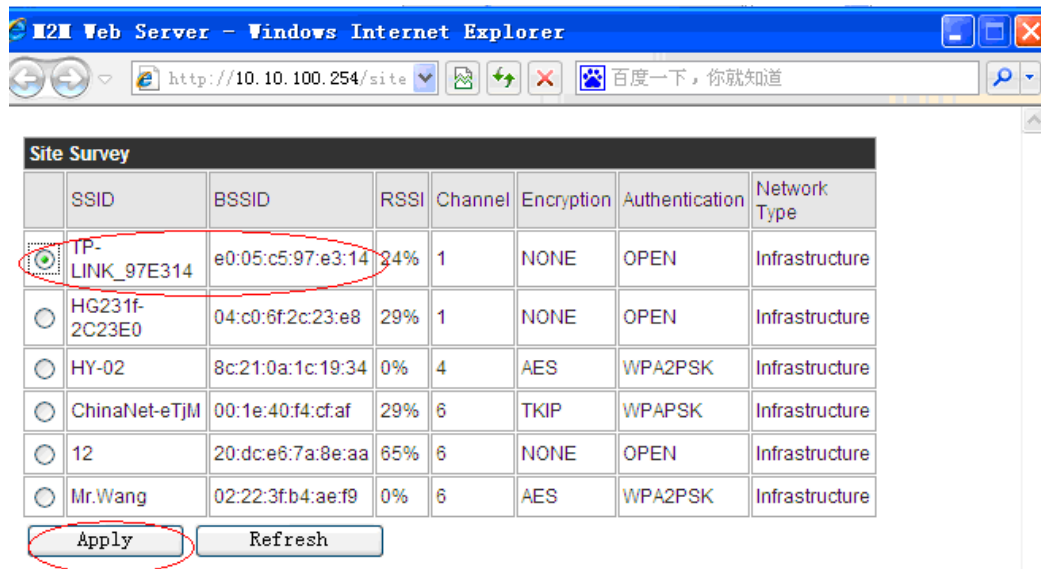


Then click "Search" and we can see and choose the wireless devices



> Here is the wireless device available for use.

- Choose the desired device as below



> Click "Apply"

6. Enter the correct configuration in the dialogue as below jpg shows.

The image displays two screenshots of the 'STA Interface Setting' configuration page. The top screenshot shows the initial configuration with the following settings:

- AP's SSID: TP-LINK_97E314
- MAC Address (Optional):
- Security Mode: WPA2PSK
- Encryption Type: TKIP
- Pass Phrase: xxxxxxxx
- WAN Connection Type: DHCP (Auto config)

The bottom screenshot shows the configuration after changing the WAN Connection Type to Static Mode. The Static Mode options are visible:

- Static Mode: STATIC (fixed IP)
- IP Address: 0.0.0.0
- Subnet Mask: 0.0.0.0
- Default Gateway: 0.0.0.0

[中文](#)
[English](#)

[Mode Selection](#)
[AP Interface Setting](#)
[STA Interface Setting](#)
[Application Setting](#)
[Device Management](#)

STA Interface Setting

You could configure STA interface parameters here.

STA Interface Parameters	
AP's SSID	TP-LINK_97E314 Search...
MAC Address (Optional)	<input type="text"/>
Security Mode	WPA2PSK ▼
Encryption Type	TKIP ▼
Pass Phrase	<input type="password" value="xxxxxxxx"/>

WAN Connection Type: STATIC (fixed IP) ▼

Static Mode	
IP Address	192.168.1.105
Subnet Mask	255.255.255.0
Default Gateway	192.168.1.1

> Click "Apply" after all these configuration steps;

7. Select "Serial and other settings" as below;

[Application Setting](#)
[Device Management](#)

Uart Setting

Baudrate	115200 ▼
Data Bits	8 ▼
Parity	None ▼
Stop	1 ▼
CTSRTS	Disable ▼

UART AutoFrame Setting

UART AutoFrame	Disable ▼
----------------	-----------

Network Setting

Mode	Server ▼
Protocol	TCP ▼
Port	9100
Server Address	10.10.10.100
MAX TCP Num. (1~32)	32
TCP Time out (MAX 600 s)	300

- > Click “Apply” after all setting done.
8. Restart the module as below;

Device Management

4.01.5

You may configure administrator account and password, load default setting or update firmware.

Administrator Settings

Account	admin
Password	admin

Apply Cancel

Restart Module

Restart Module	Restart
----------------	---------

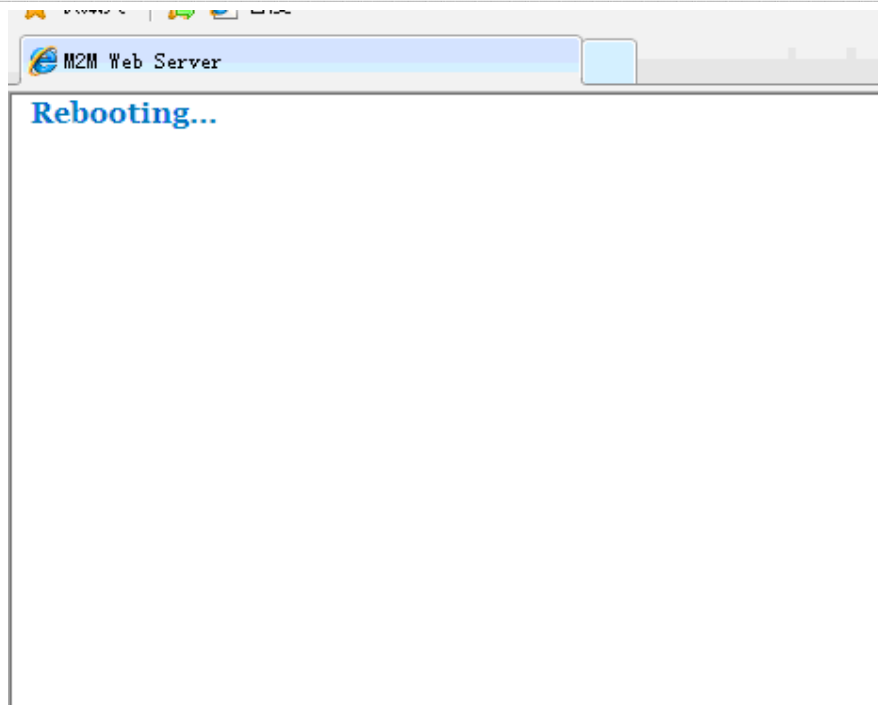
Load Factory Defaults

Load Default Button	Load Default
---------------------	--------------

Update Firmware

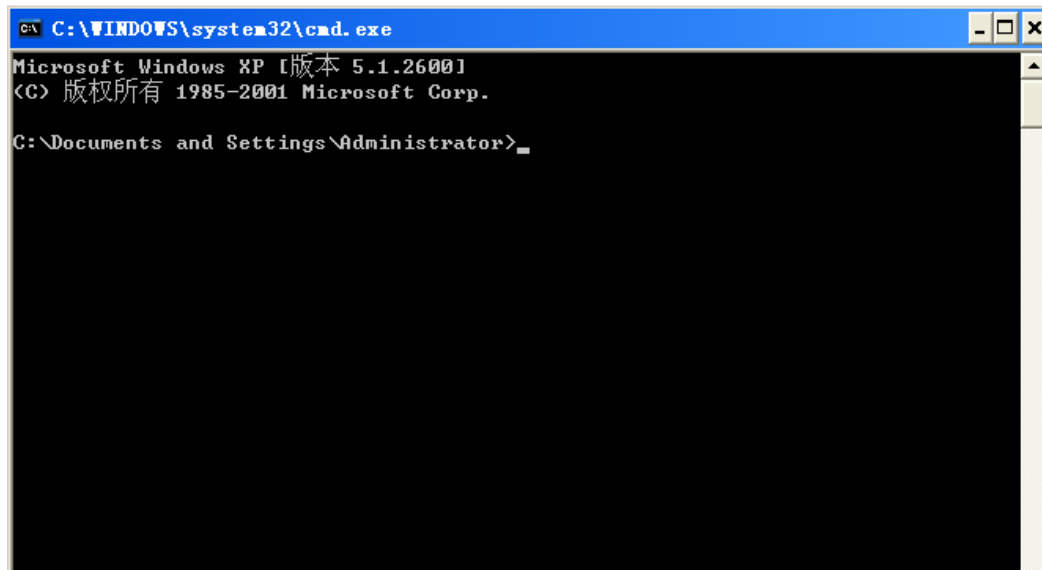
Location:	<input type="text"/> 浏览...
-----------	----------------------------

Apply



> Module configuration done

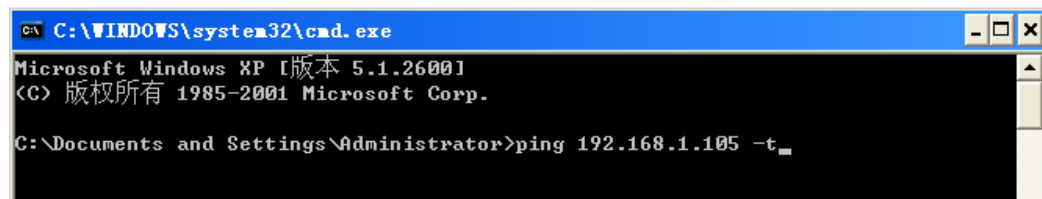
9. Computer “Start” → “Run” Input word “CMD” , we have below dialog :



```
C:\WINDOWS\system32\cmd.exe
Microsoft Windows XP [版本 5.1.2600]
(C) 版权所有 1985-2001 Microsoft Corp.

C:\Documents and Settings\Administrator>
```

> Input “ping 192.168.1.105 -t” as below



```
C:\WINDOWS\system32\cmd.exe
Microsoft Windows XP [版本 5.1.2600]
(C) 版权所有 1985-2001 Microsoft Corp.

C:\Documents and Settings\Administrator>ping 192.168.1.105 -t
```

> Press “Enter”

If details shows as below, means connection is Ok;


```
C:\WINDOWS\system32\cmd.exe - ping 192.168.1.105 -t
Microsoft Windows XP [版本 5.1.2600]
(C) 版权所有 1985-2001 Microsoft Corp.

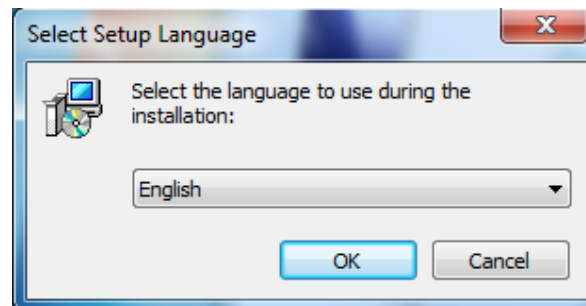
C:\Documents and Settings\Administrator>ping 192.168.1.105 -t

Pinging 192.168.1.105 with 32 bytes of data:

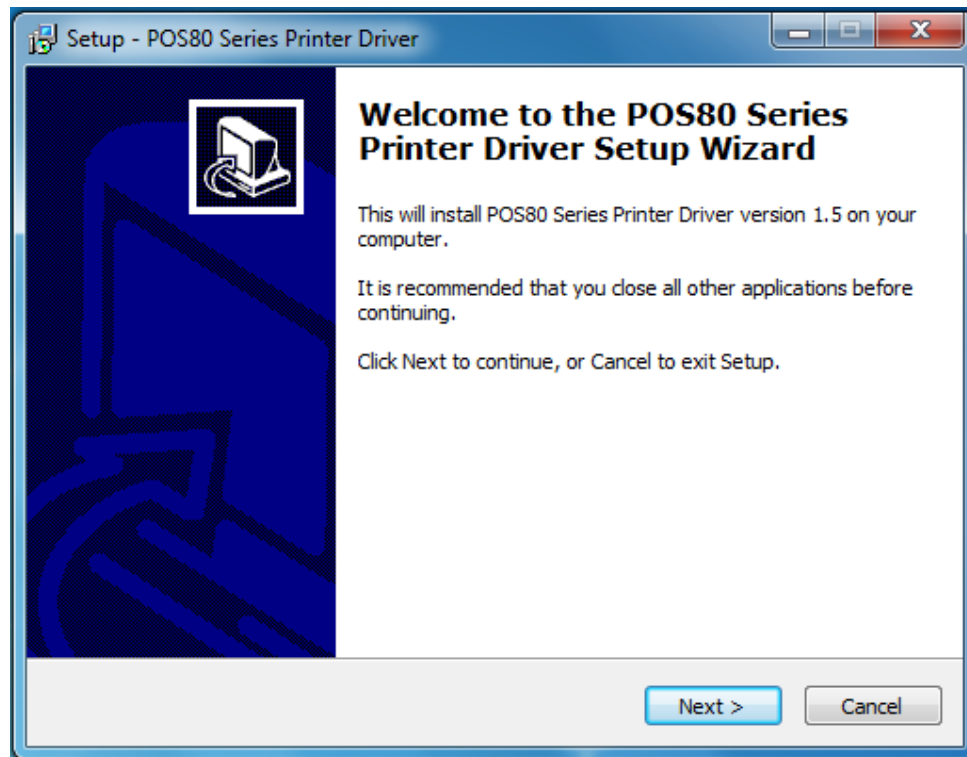
Reply from 192.168.1.105: bytes=32 time=61ms TTL=255
Reply from 192.168.1.105: bytes=32 time=1ms TTL=255
Reply from 192.168.1.105: bytes=32 time=3ms TTL=255
Reply from 192.168.1.105: bytes=32 time=2ms TTL=255
Reply from 192.168.1.105: bytes=32 time=86ms TTL=255
Reply from 192.168.1.105: bytes=32 time=1ms TTL=255
Reply from 192.168.1.105: bytes=32 time=2ms TTL=255
Reply from 192.168.1.105: bytes=32 time=1ms TTL=255
```

Now, lets talk about the “correct driver installation “

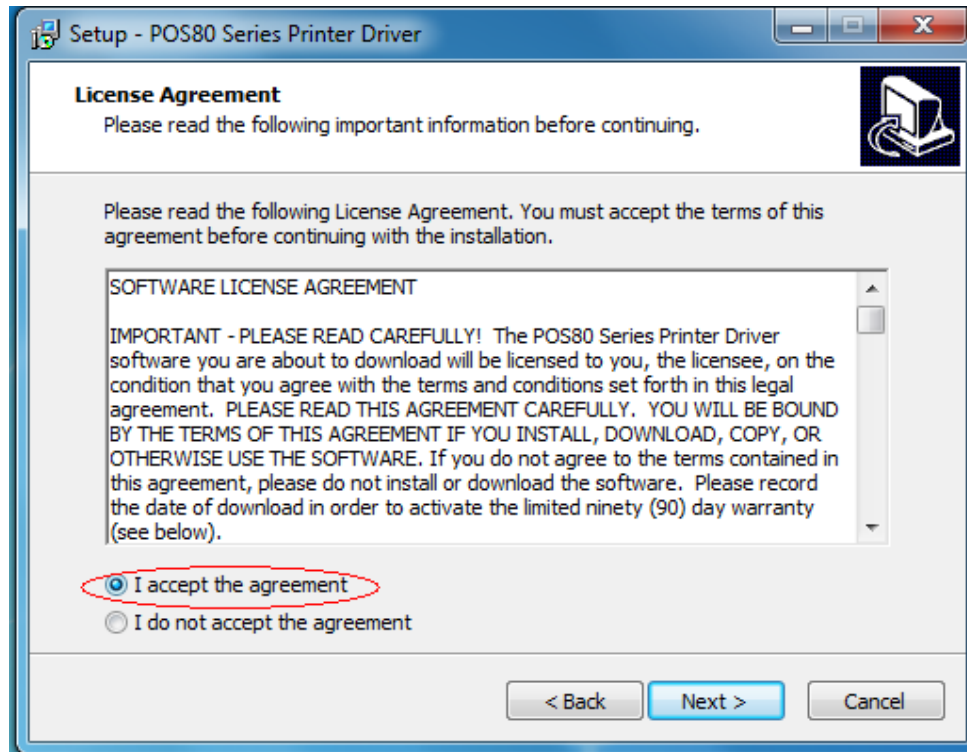
1: Insert the driver CD – choose the language – next :



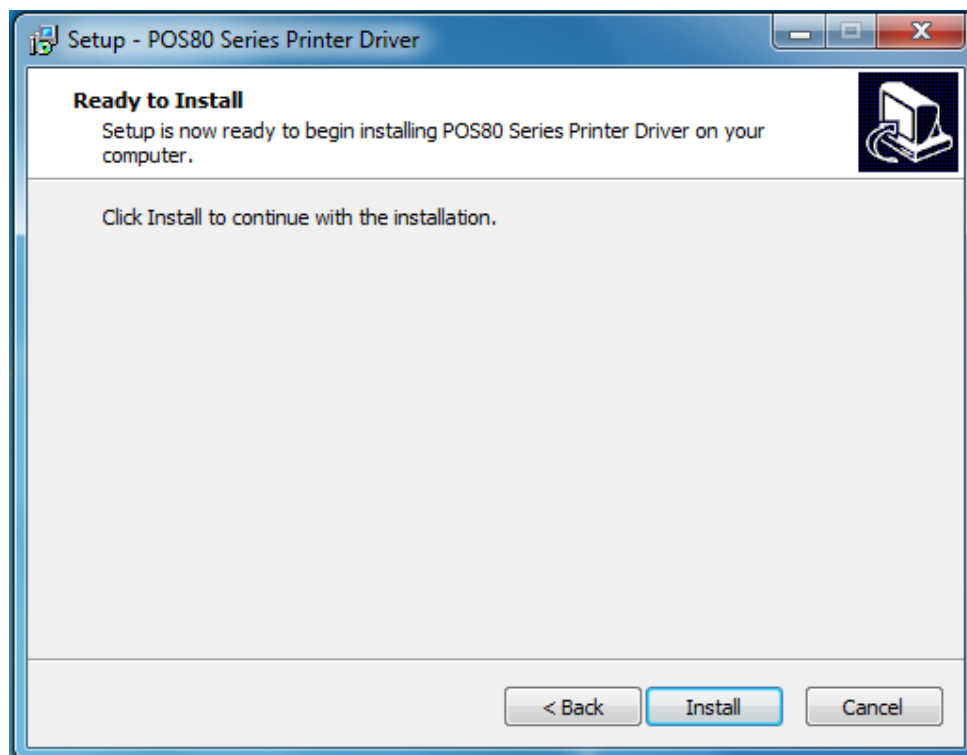
2: After press “ OK” , then go Next ;



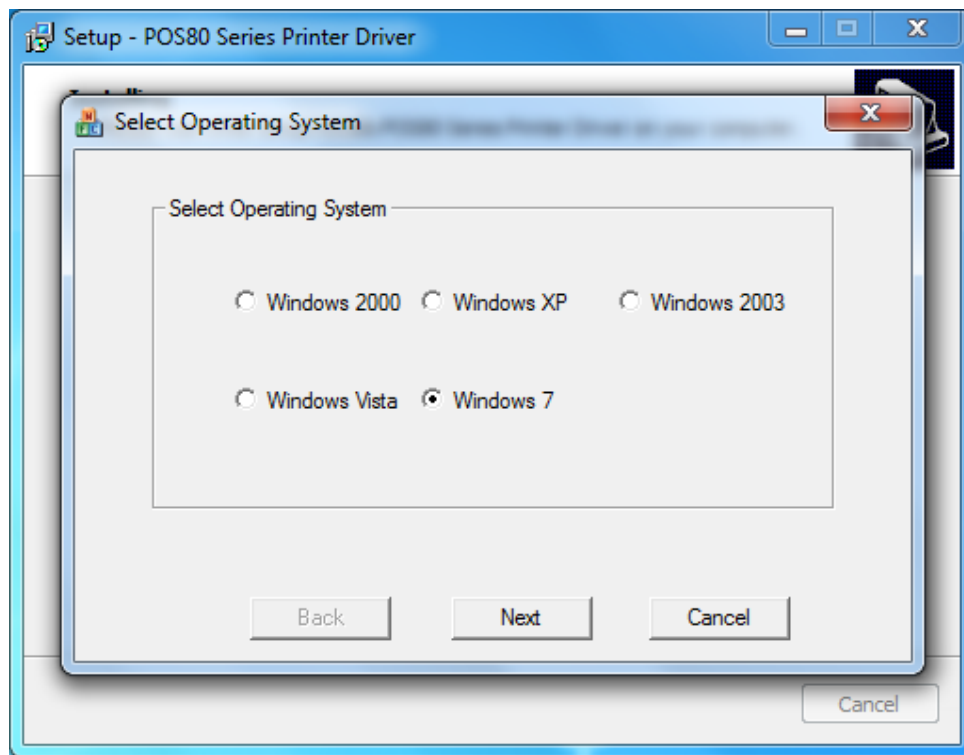
3: Read the software terms and instruction carefully and select “accept” then go forward.



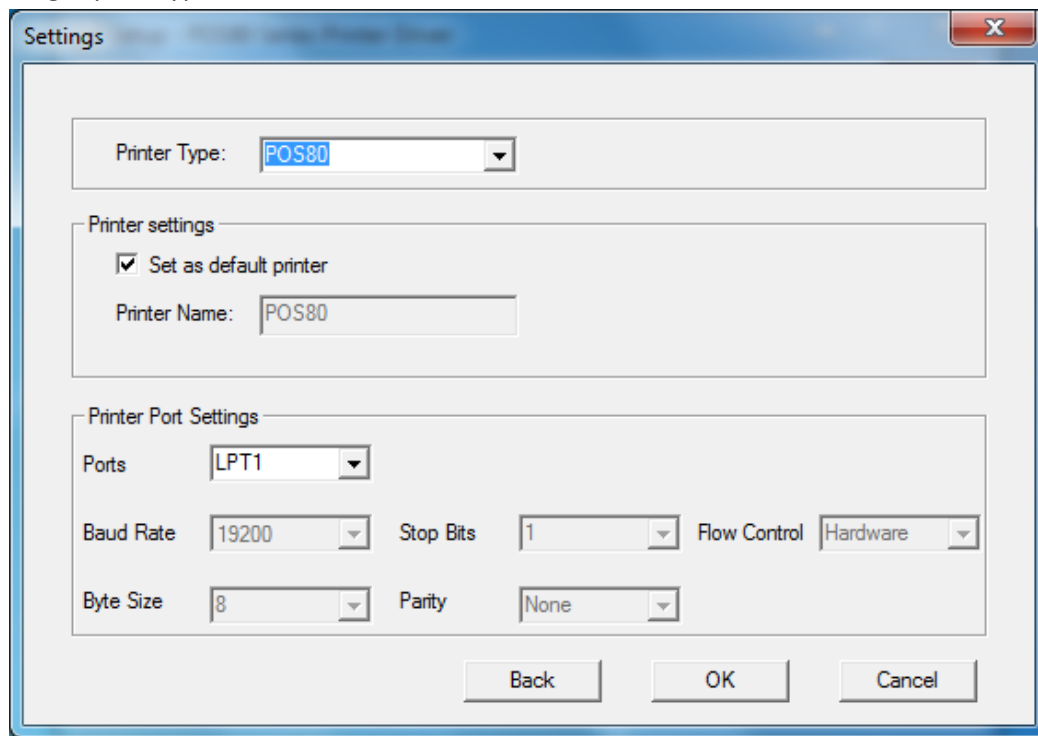
4: Click "Next" to keep installing, this process might be blocked by your security software. Please help to give the permission by manual setting.



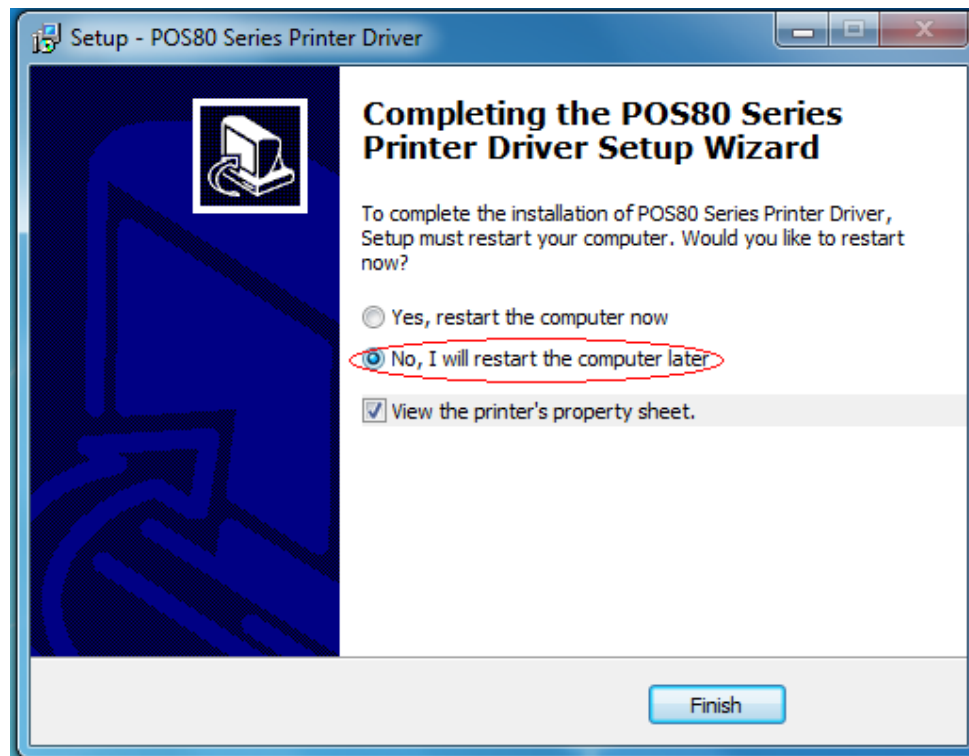
5: Choose the desired system and Next;



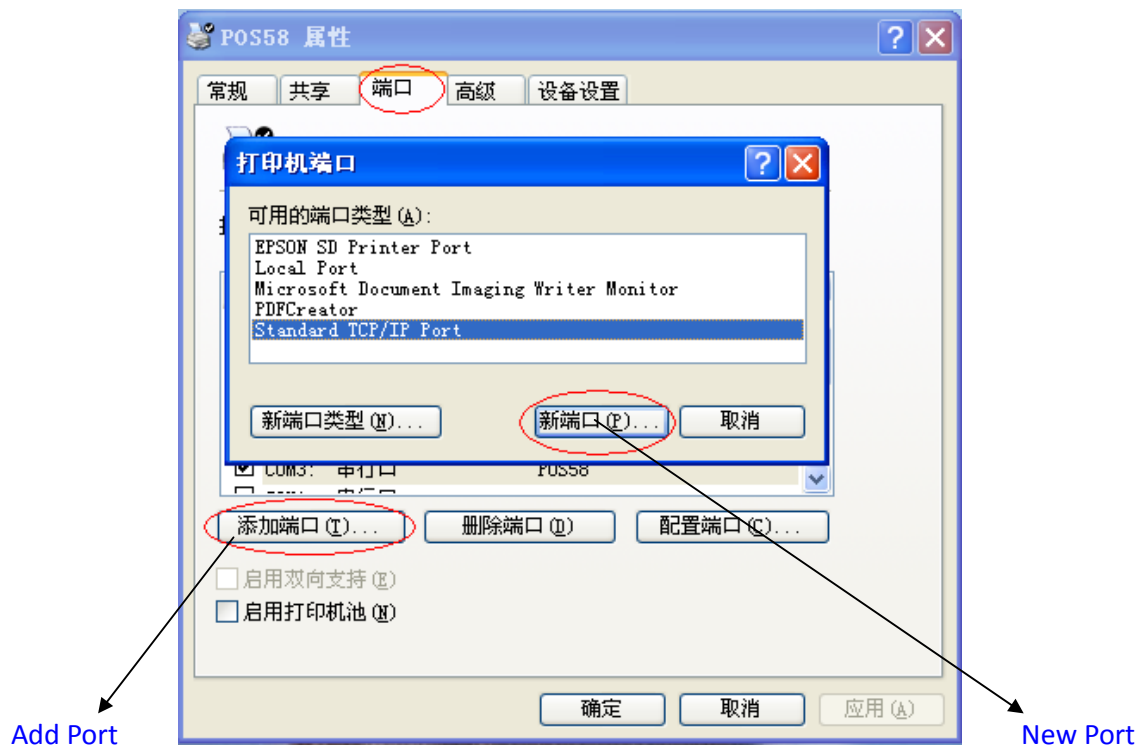
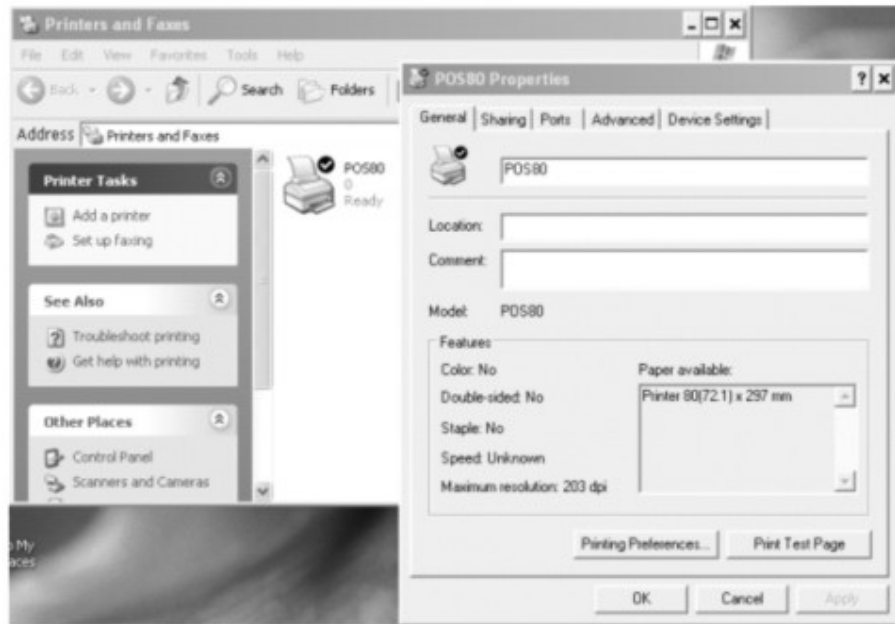
6: Choose the right print type as below



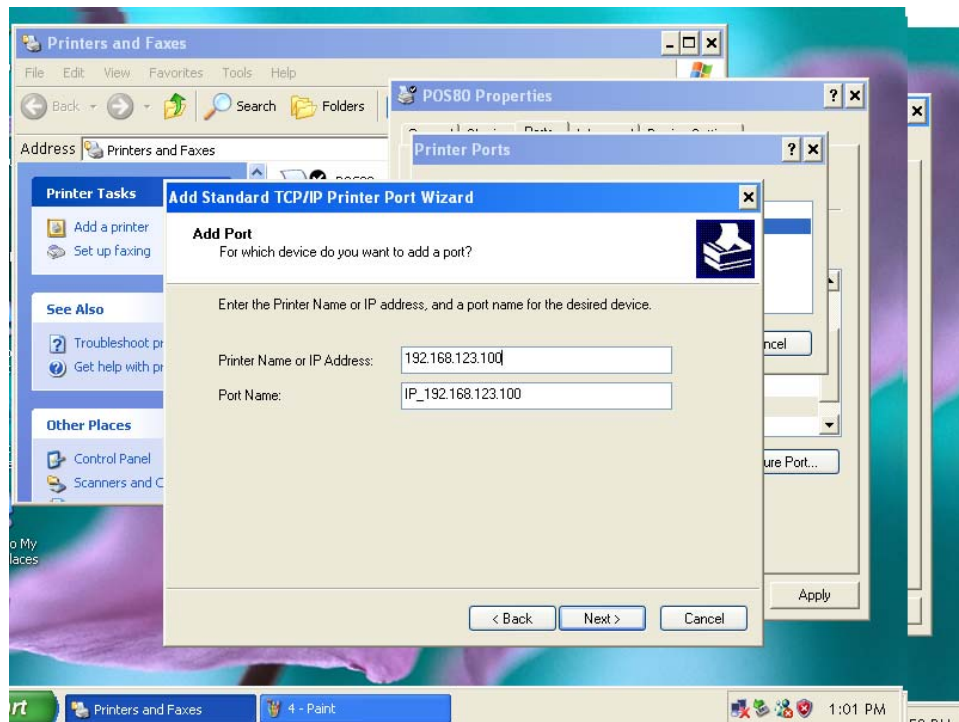
7: Driver installation Done



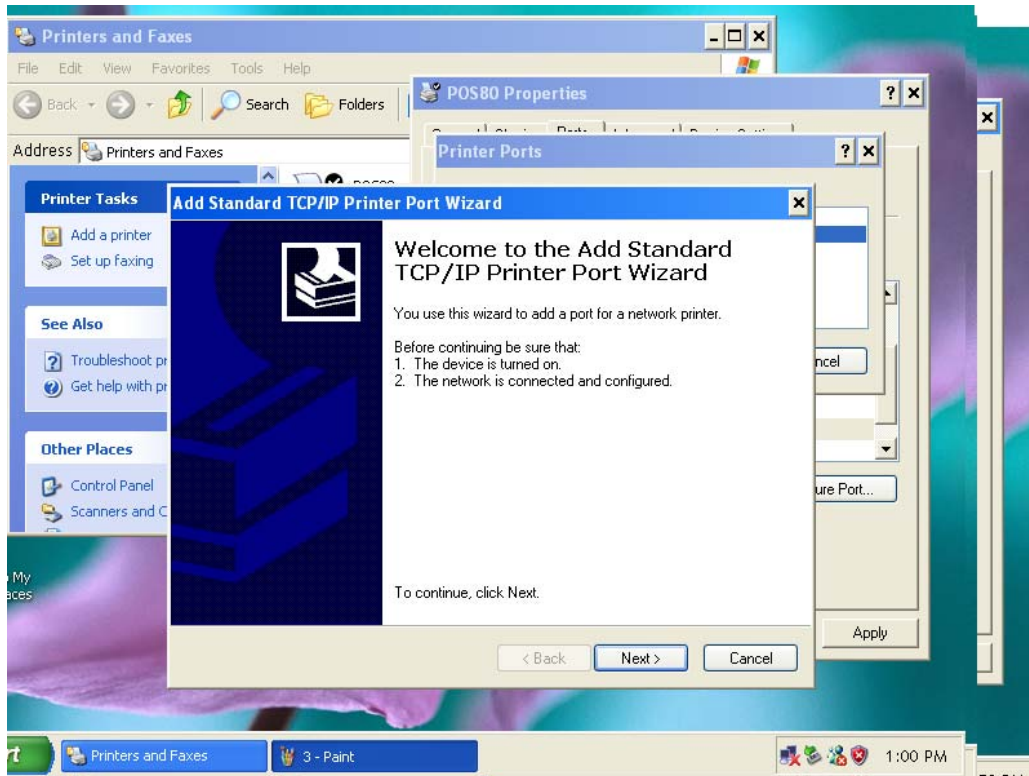
8: Click "Control panel" in the computer main menu, click "printer and fax" to select the printer which one you just installed, click "Add Port" and choose "Stand ICP/IP Port", then click "new port"



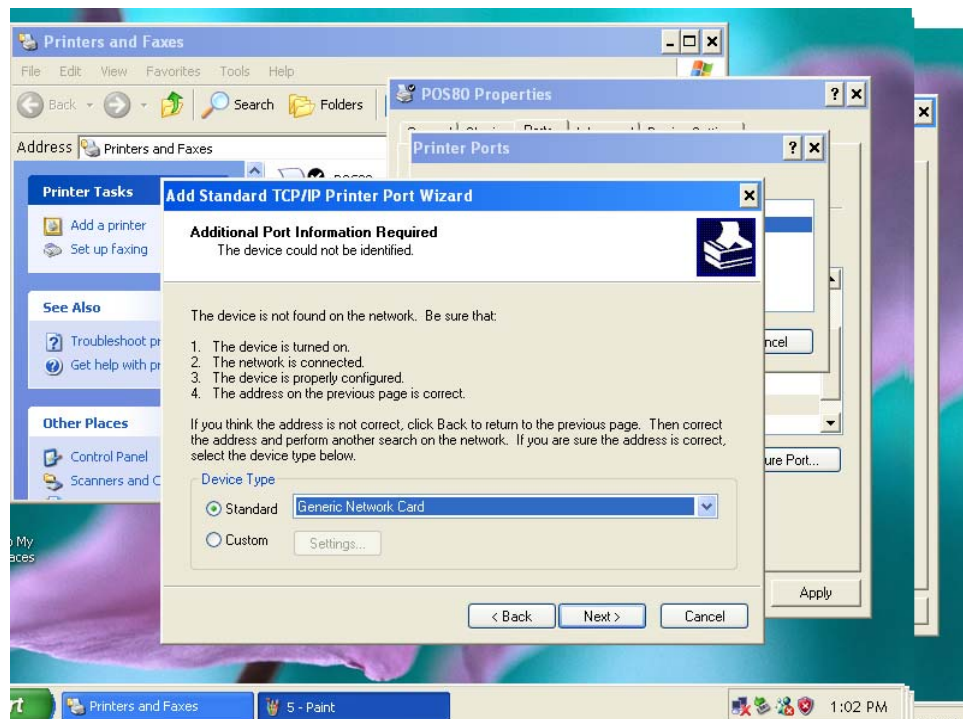
9: Enter the IP address into "Printer Name" dialog, and click "Next" to continue the installation.



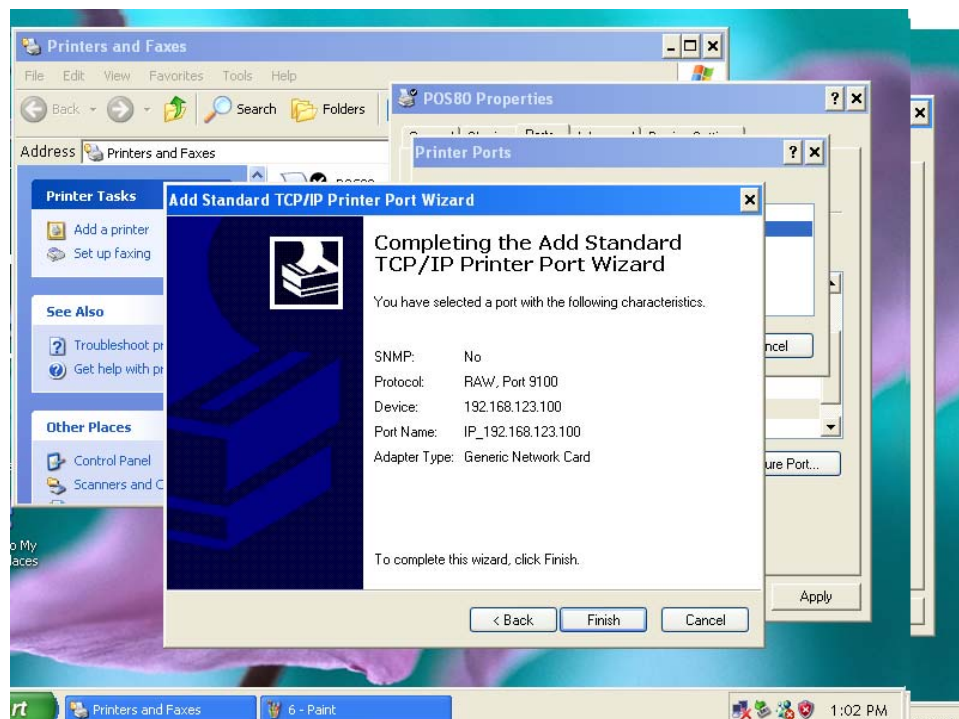
10: Click "Port" to Select "Add Standard TCP/IP Printer Port Wizard", click "Next" to continue the installation.



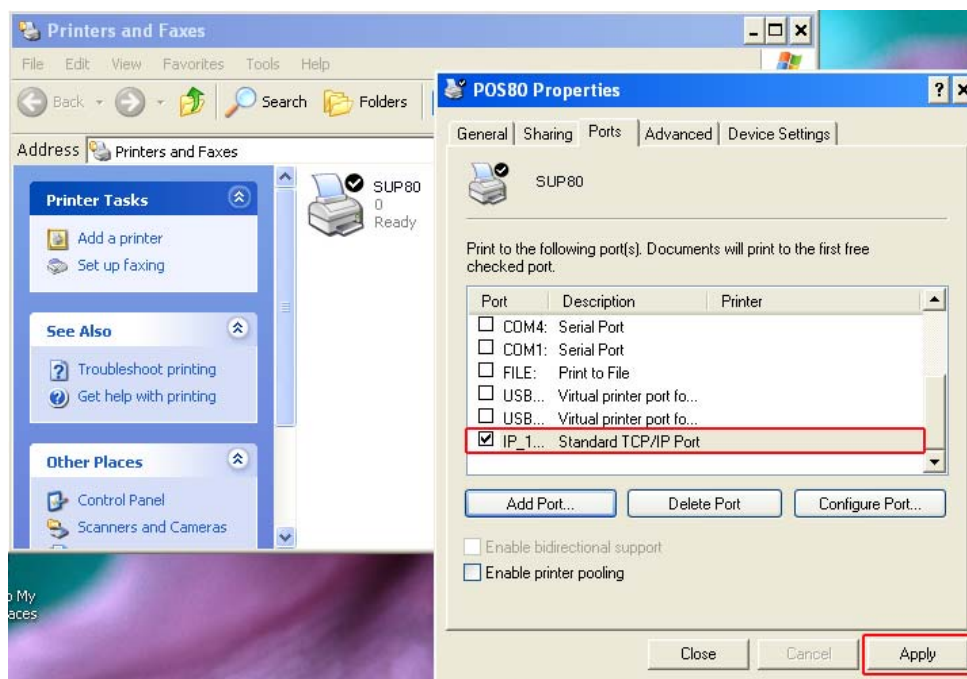
11: Add the standard TCP / IP Printer Port Wizard, select the device type, and then click “Next” to continue the installation, See the following image:

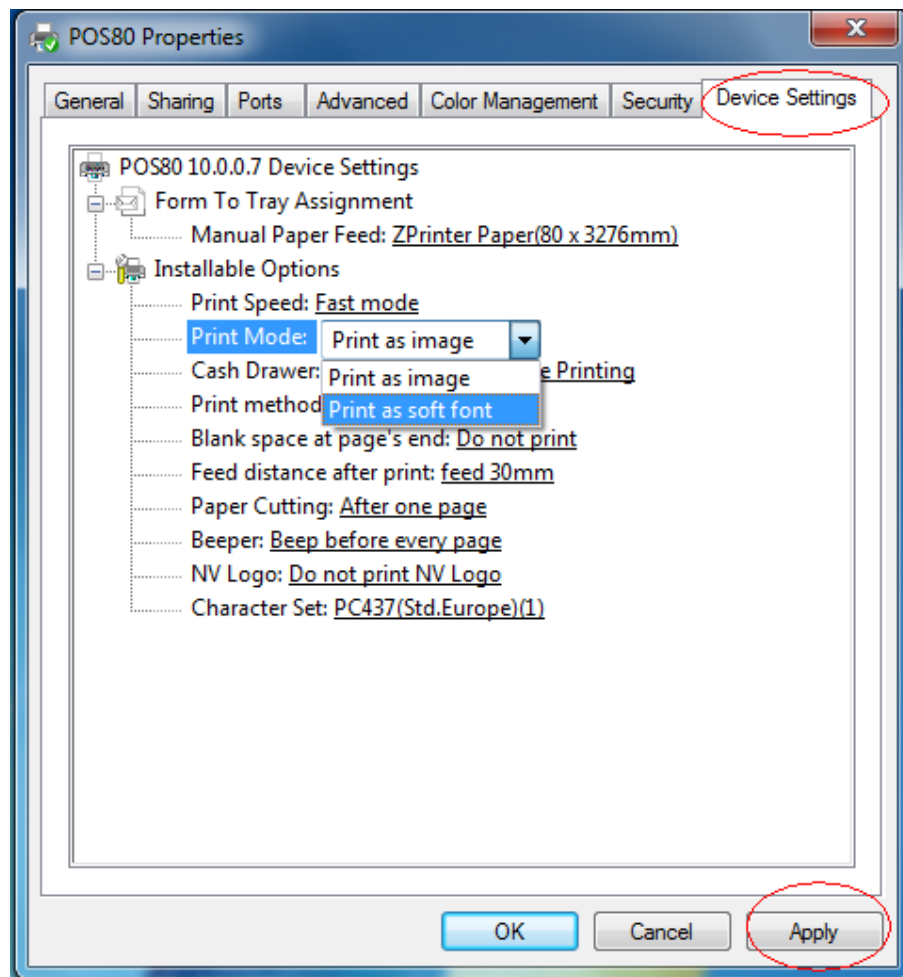


12: Click “Finish” to complete the installation, see the following image:

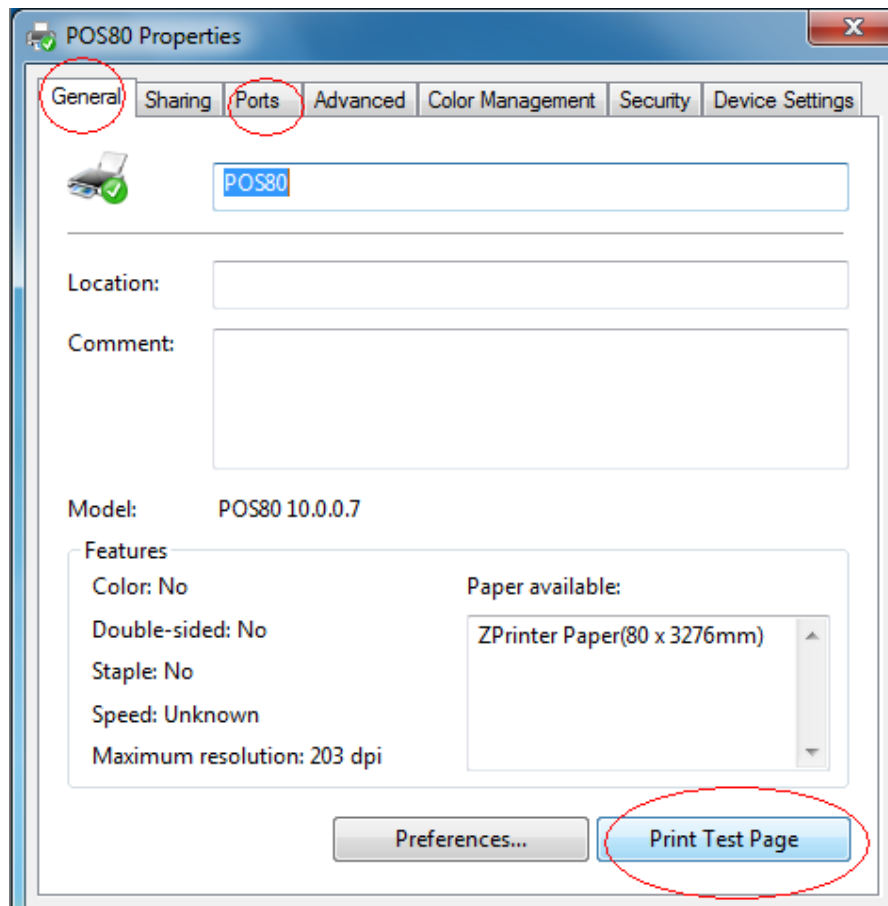


14: Installation will return to “Properties” interface, and then select the correct IP port, click “Apply”, you can now print a test page. See the following image:





> Return to "General" and click "Print Test Page " as below.



> If the test print is ok, Installation is successful.

If any problem contact BayLan Technical Centre.

<mailto:support@baylan.com>